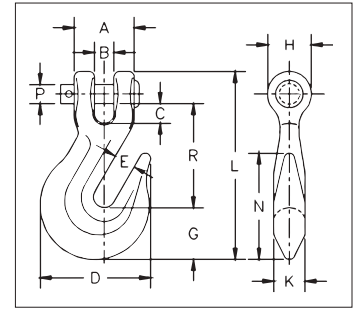




A-330 Clevis Grab Hook

- Forged steel - Quenched & Tempered.
- Design factor is 4:1.
- Features quick and easy assembly.
- Designed for Grade 8 chain.



A-330 Clevis Grab Hooks

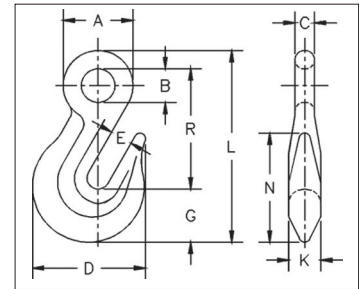
Chain Size (in)	Stock No.	Working Load Limit (lb)	Weight Each (lb)	Dimensions (in)												
				(lb)	B	C	D	E	G	H	K	L	N	P	R	
1/4	1027249*	3500	.36	1.00	.32	.31	1.81	.34	.88	.72	.47	3.05	1.75	.31	1.64	
5/16	1027267*	4700	.62	1.22	.43	.36	2.12	.44	.97	.91	.59	3.66	2.06	.38	2.02	
3/8	1027285*	7100	1.00	1.42	.48	.49	2.53	.50	1.17	1.00	.72	4.42	2.34	.44	2.41	
1/2	1027329*	12000	2.22	1.88	.57	.51	3.56	.66	1.53	1.25	.78	5.72	2.97	.63	3.19	
5/8	1027347	18100	4.41	2.31	.71	.67	4.39	.78	1.78	1.56	1.09	6.83	4.31	.75	4.09	
3/4	1027365	24700	6.50	2.62	.94	.94	5.22	.94	2.13	1.88	1.31	8.13	5.09	.88	4.63	

* These A-330 hooks are forged with an "8" designating Grade 80, and are suitable for use with Grade 8 chain in overhead lifting applications as long as the hook is proof-tested as part of the chain sling assembly or as an individual component per ASME B30.9. We recommend the use of the A-1338 / A-1358 which is proof tested and supplied with a proof test certificate.



A-323 Eye Grab Hook

- Forged steel - Quenched & Tempered.
- Design Factor is 4:1.
- Designed for Grade 8 chain.



A-323 Eye Grab Hooks

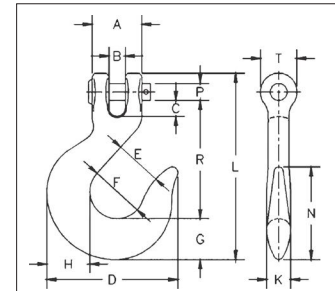
Chain Size (in)	Stock No.	Working Load Limit (lb)	Weight Each (lb)	Dimensions (in)									
				(lb)	B	C	D	E	G	K	L	N	R
1/4	1026384*	3500	.28	1.09	.53	.31	1.81	.34	.88	.47	3.05	1.75	1.88
5/16	1026400*	4700	.45	1.31	.62	.38	2.12	.44	.97	.59	3.59	2.06	2.28
3/8	1026428*	7100	.79	1.56	.75	.44	2.53	.50	1.17	.72	4.28	2.34	2.69
1/2	1026464*	12000	1.75	1.94	.88	.53	3.56	.66	1.53	.78	5.44	2.97	3.38
5/8	1026482*	18100	3.25	2.48	1.16	.66	4.41	.79	1.89	1.16	6.82	4.25	4.25
3/4	1026507	24700	5.94	2.88	1.38	.75	5.22	.94	2.13	1.31	8.06	5.09	5.16

* These A-323 hooks are forged with an "8" designating Grade 80, and are suitable for use with Grade 8 chain in overhead lifting applications as long as the hook is proof-tested as part of the chain sling assembly or as an individual component per ASME B30.9. We recommend the use of the A-1328 which is proof tested and supplied with a proof test certificate.



A-331 Clevis Slip Hook

- Forged alloy steel – Quenched & Tempered.
- All pins are alloy steel – Quenched & Tempered.
- Not suitable for use with Grade 80 chain and chain slings used in overhead lifting. For slings or lifting chains, Grade 80 or 100 alloy components are recommended.



A-331 Clevis Slip Hooks

Chain Size (in)	Stock No.	Working Load Limit (lb)	Weight Each (lb)	Dimensions (in)													
				A	B	C	D	E	F	G	H	K	L	N	P	R	T
1/4	1027524	2750	0.55	1.06	0.32	0.29	2.76	0.94	1.19	0.81	0.88	0.50	3.94	2.13	0.31	2.58	0.72
5/16	1027542	4300	0.79	1.22	0.43	0.34	3.05	1.06	1.25	0.94	1.00	0.56	4.53	2.24	0.38	2.87	0.97
3/8	1027560	5250	1.21	1.38	0.45	0.44	3.62	1.31	1.50	1.13	1.19	0.66	5.16	2.56	0.44	3.25	1.06
7/16	1027588	7000	2.05	1.73	0.59	0.60	4.33	1.56	1.81	1.38	1.44	0.81	5.98	3.05	0.56	3.70	1.19
1/2	1027604	9000	2.76	1.88	0.57	0.53	4.80	1.69	1.94	1.56	1.63	0.91	6.54	3.44	0.63	4.02	1.31
5/8	1027622	13500	4.74	2.30	0.71	0.71	5.63	2.01	2.38	1.81	1.94	1.09	7.87	4.02	0.75	4.92	1.56
3/4	1027640	19250	11.28	3.19	1.18	1.29	7.38	2.50	3.00	2.38	2.50	1.44	10.02	5.06	1.00	6.09	2.09

4:1 Design Factor.